



— HOTEL & EXPERIENCES —
Estancia Cerro Guido

Come to visit
Estancia Cerro Guido
2025-2026 Season





Surrounded by a privileged environment and with the eighth wonder of the world in the background, the 100,000 hectares of land where we are located invite us to immerse ourselves in Patagonia in a different way.

At Estancia Cerro Guido, the largest operating Estancia in the region,

we invite you to learn about the Estancia's traditions and customs firsthand, where you'll learn about its history, livestock farming, and rural life in one of the most remote corners of the world. You can also go on a horseback ride, ideal for those who want to enjoy the Patagonian landscape and observe local wildlife in its natural habitat. A perfect outing for nature and local culture lovers.

Our Activities



**Horseback
riding**

Horseback riding is a must for those who want to try it for the first time or for experienced riders who simply want to enjoy the Estancia's privileged surroundings.



Cultural

Immerse yourself in the true life of the Estancia, learning about the traditions and daily work of the countryside.



Practical information

To fully enjoy your experience in Patagonia, we invite you to read our recommendations on the type of clothing to wear.

In Patagonia, the weather is very changeable: it is not uncommon to experience all four seasons in a single day, or in just a few hours!

Summer (December to March) isn't very hot, with temperatures averaging 16 degrees Celsius. It can also be rainy and windy, with summer being the season with the strongest winds (over 80 km/h). Therefore, to enjoy your walks, it's essential to have the right clothing. **We recommend quick-drying synthetic fabrics** and avoid cotton and jeans: if they get wet, they keep you cold and take a long time to dry.

What to bring?

Pants: It is ideal to wear long trekking pants. Made of lightweight, quick-drying fabric. Shorts are optional; they don't take up much space.

First layers: T-shirts or shirts with long sleeves are required; short-sleeved options are optional.

Base layers:
-Polar (can be of different thicknesses)
-Down jacket (thin).
-A windproof and waterproof jacket, preferably breathable, such as Gore-Tex. This is the essential piece of clothing for your walks. We don't recommend a plastic poncho, as it can easily tear in the wind.

Accessories: thin gloves and hat, scarf or Buff type neck gaiter, temperature changes can be abrupt, even in summer!

Rain pants: another must-have, always carry them. in the backpack when they go out for a walk.

Refillable bottle (750 ml or 1 lt): to stay hydrated for the day and avoid disposable water bottles.

Comfortable walking shoes: For our hikes, we recommend high-top trekking boots. The terrain can be quite uneven with dense vegetation, so it's best to have a good sole and ankle support. For horseback riding, a pair of sneakers is sufficient, or comfortable shoes that aren't too thick to fit in the stirrups.

Sun protection: sunscreen factor 30 minimum and sunglasses (category 3). Patagonia has strong solar radiation in the summer, which you often won't feel. With the wind and clouds, you won't feel the heat, so sunscreen is essential. A sun hat is optional (don't let it blow away in the wind!)

Daypack (25-30 lt): very useful for carrying your water, coat, picnic or whatever is deemed necessary for your walk.

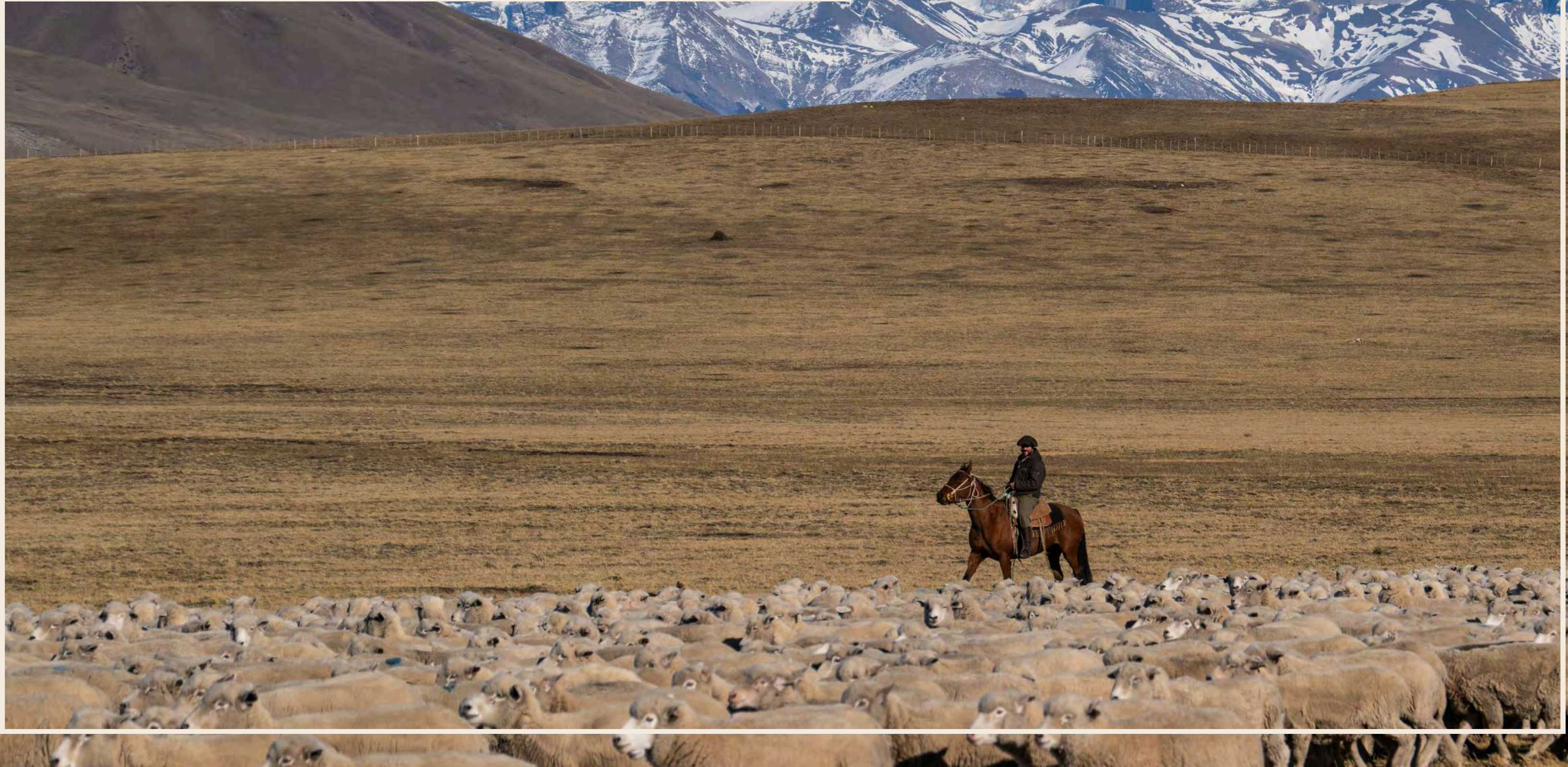
Dry bags: a useful detail to wrap your belongings in the backpack and prevent them from getting wet.



Horseback riding



Enjoy a unique experience exploring Patagonia on exciting horseback rides



Caravana

Designed for the whole family, this easy and very pleasant hike will allow us to appreciate some of the nature near the estancia's main square. We set off for a tour of the fields surrounding our stable, where it's common to see Estancia animals, such as sheep and horses, as well as native wildlife like guanacos, all accompanied by open views of the vast Patagonian steppe.

TECHNICAL INFORMATION

Modality: Half day	Distance: 7,5 km. / 4.7 mi.
Rate per person: CLP \$ 98.890	Minimum age required: 8 years
Start time: 9:30 am - 3:00 pm	Difficulty level: Low - No experience required <div><div></div><div></div><div></div></div>
Includes: Snack	Duration: 2,5 hrs
Number of people: 2 minimum, 6 maximum	





Cultural

Immerse yourself in the true life of the Estancia, learning about the traditions and daily work of the fields





Estancia Day

On this beautiful tour, we'll enjoy stunning landscapes to gain an in-depth understanding of the vast territory of Estancia Cerro Guido. Our ride is designed for riders with or without prior experience who want to experience Patagonia on horseback and discover the natural beauty of the Estancia's surroundings, with its spectacular views of Lake Sarmiento, the Sierra Baguales, and the Paine Massif, surrounded by wildlife such as guanacos, rheas, foxes, horses, and sheep. After our ride through the Estancia's breathtaking landscapes, we'll have lunch at the hotel restaurant, featuring unique local dishes.

After lunch, our visit begins in the administration hall with a half-hour introduction to the area's map and an overview of Estancia life within the historical context of Patagonia, which is closely linked to the development of extensive sheep farming. We'll then participate in typical Estancia life activities. In the stables, we'll have the opportunity to learn more about the horses and their care. Then, in the organic garden, we'll harvest vegetables used in the kitchen and collect eggs from free-range hens.

TECHNICAL INFORMATION

Modality:
Full day

Start time:
9:30 am

Rate per person:
CLP \$218.240

Number of people:
2 minimum, 10 maximum

Includes:
Snack and lunch in the hotel

Difficulty level:
Low ● ● ●

Duration:
7 hrs.

Minimum age required:
No restriction



Estancia Cultural Tour

Our guided tour is an invitation to discover an authentic Patagonian Estancia, where not only the original buildings—valuable testaments to the region's architectural heritage—have been preserved, but also the traditional lifestyle that defines the very essence of Patagonia. This tour of the Estancia, founded over 100 years ago, is a true journey back in time. We begin with a map of the province and a historical introduction to livestock farming in Patagonia. We then walk through different areas of the Estancia, such as the vegetable garden and greenhouse, where we can sample some of the products, season permitting. We then visit the manor house and the shearing shed. In the latter building, the most emblematic of all Estancia work, you can witness the traditional shearing and understand the wool grading process (only during shearing season).

TECHNICAL INFORMATION

Modality:
Half day

Difficulty level:
Low ● ● ●

Start time:
9:30 am

Duration:
3,5 hrs.

Rate per person:
CLP \$136.070

Minimum age required:
No restriction

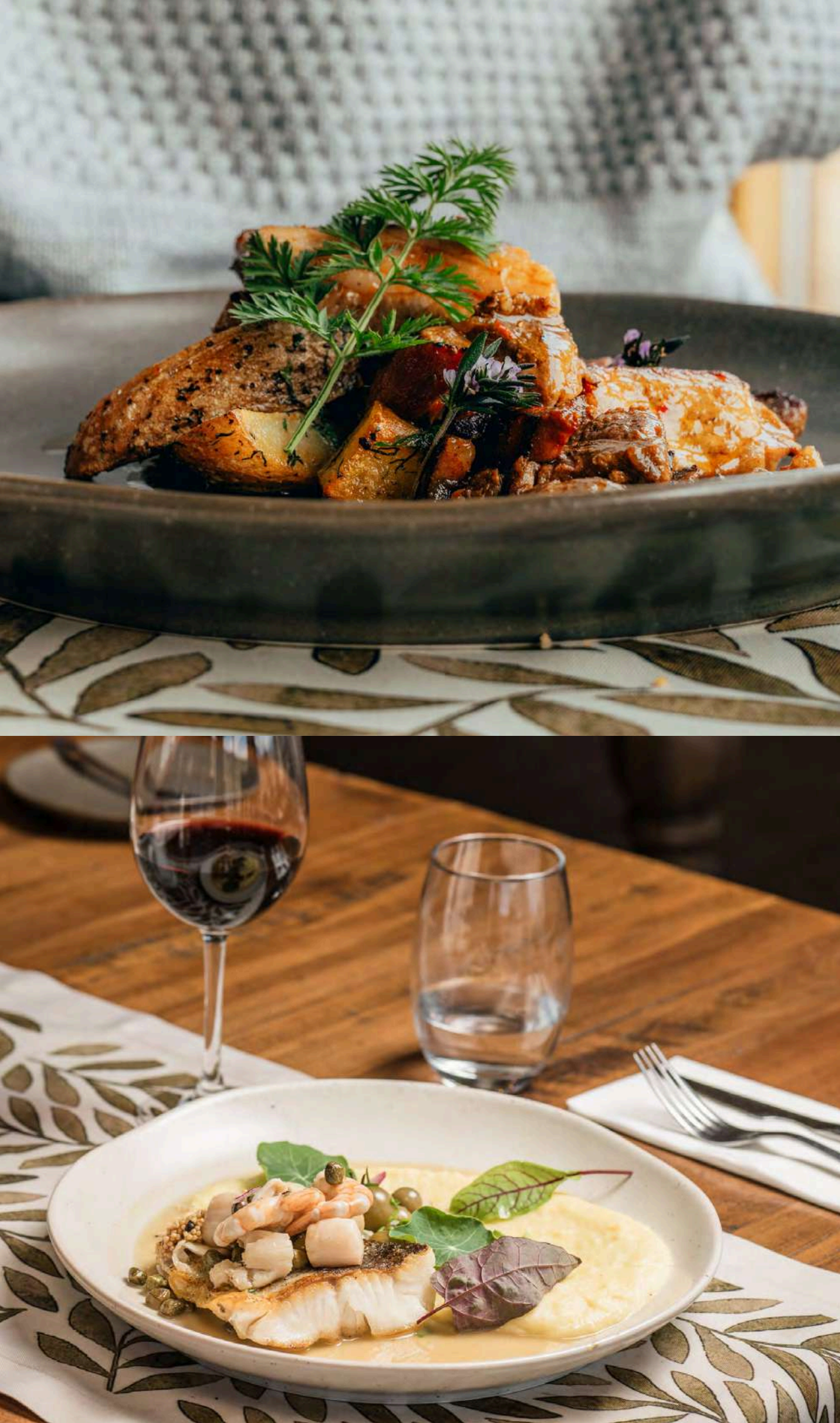
Number of people:
2 minimum, 8 maximum





RESTAURANT RATES

We invite you to experience the flavors, textures, and techniques native to the local culture



Restaurant Rates

Estancia Cerro Guido



INCLUDES

Breakfast

Buffet with a variety of breads - pastries - fruits - cereals - coffee - juices - variety of tea

CLP \$35.420

Lunch

Starter - Main course - Dessert
Glass of wine, beer or beverage - Tea or coffee

CLP \$62.590

Dinner

Appetizer - Starter - Main course - Dessert
- 2 Glasses of wine, beer or other beverages
- 1 Coffee, tea or infusion

CLP \$76.560

Children's menu

Main course - Dessert - Beverage

CLP \$37.510

Box lunch

Sandwich - snack

CLP \$27.500

• Rates per person



Restaurant Rates Estancia Cerro Guido



INCLUDES

Traditional lamb barbecue

Lamb barbecue and a variety of cuts of beef and/or pork, as well as homemade sausages.

CLP \$80.080

*Fish as an alternative.

Dessert buffet.

Wine, 1 bottle for 3 persons or drink or juice

Bread - sopaipillas - pebre - butter - sauce - coffee

Extras:

Beers - liquors - cocktails

- Rates per person
- Minimum 6 guests for lamb barbecue

Reservation, Payment and Cancellation Policies

- The reservation must be prepaid by paying 50% of the total service.
- The remaining 50% (balance) must be paid a maximum of 72 hours prior to the day of service.
- Cancellations made up to 72 hours prior to service will be free of charge.
- Cancellations made after the specified time will not result in a refund of the payment.
- A NO SHOW is considered to be a delay of 30 minutes or more (no refund is allowed).







CONTACT

sales@cerroguido.com

 estanciacerroguido.com

 Instagram: [@estancia.cerroguido](https://www.instagram.com/estancia.cerroguido)

 Email: bookings@cerroguido.com

 +569 5 639 64 22

— HOTEL & EXPERIENCES —

Estancia Cerro Guido